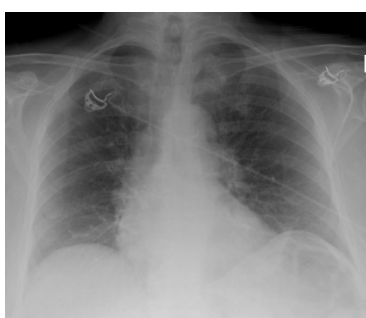


# COVID-19: CXR reporting

The British Society of Thoracic Imaging (BSTI) has provided [reporting templates](#) with gradings for use in CXR during the COVID-19 pandemic. These cases came through the Emergency department of the Imperial College Healthcare NHS Trust over a weekend in late March 2020 and have had the gradings applied as examples.

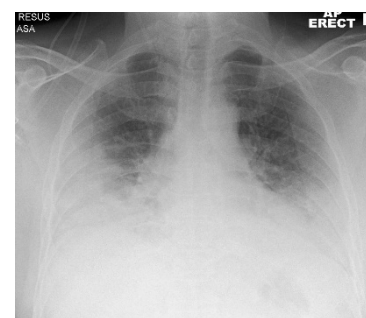
BSTI COVID-19 CXR reporting templates		
<b>CVCX0</b>	Normal	COVID-19 not excluded. Correlate with RT-PCR if indicated
<b>CVCX1</b>	Classic/Probable COVID-19	Lower lobe and peripheral predominant multiple opacities that are bilateral (>> unilateral)
<b>CVCX2</b>	Indeterminate for COVID-19	Does not fit Classic or Non-COVID-19 descriptors
<b>CVCX3</b>	Non-COVID-19	Pneumothorax/Lobar pneumonia/Pleural effusion(s)/Pulmonary oedema/Other



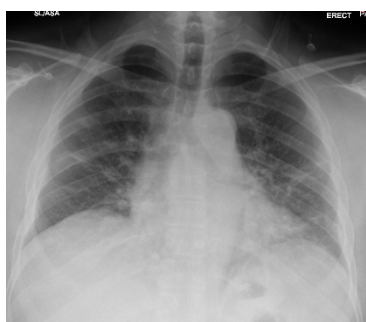
<b>BSTI code</b>	CVCX0
<b>Grade</b>	
<b>Diagnosis</b>	Normal, COVID-19 not excluded



<b>BSTI code</b>	CVCX1
<b>Grade</b>	Mild
<b>Diagnosis</b>	Classic/probable COVID-19



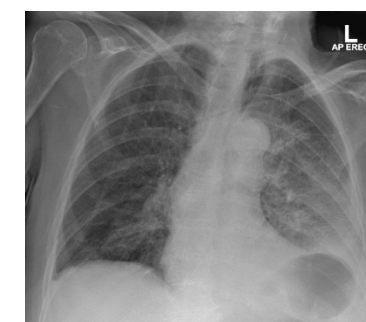
<b>BSTI code</b>	CVCX1
<b>Grade</b>	Severe
<b>Diagnosis</b>	Classic/probable COVID-19



<b>BSTI code</b>	CVCX2
<b>Grade</b>	Mild
<b>Diagnosis</b>	Does not fit Classic or Non-COVID-19 descriptors



<b>BSTI code</b>	CVCX2
<b>Grade</b>	Mild
<b>Diagnosis</b>	Does not fit Classic or Non-COVID-19 descriptors



<b>BSTI code</b>	CVCX3
<b>Grade</b>	
<b>Diagnosis</b>	Other diagnosis, LLL pneumonia

These images are taken from a presentation by Dr Mary Roddie, Consultant Thoracic Radiologist at ICHNT, given on 3 April 2020. To view the whole presentation [click here](#).