



To see the ePosters

Visit www.ukrc.org.uk/e-posters



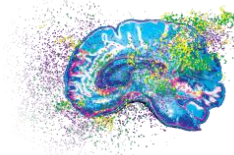
- e001 **Electrotherapy and the origins of radiotherapy**
Adrian Thomas; Mark Kynaston, Canterbury Christ Church University
- e002 **Imaging features in systemic lupus erythematosus - a pictorial review of three cases**
Shikha Pandhi; Archie Keeling; David Sarma; Sally Zebari; Helena Blake, Croydon University Hospital
- e003 **Benign mimics of soft tissue sarcomas**
Elliott Rees; Philipp Riede; Holly Christopher; Dexter Valencia; Scott McDonald, Addenbrookes Hospital
- e004 **Middle-East war refugee children: Overlooked foot pathology in the midst of the humanitarian crisis**
Stavroula Theodorou ¹; Daphne Theodorou ¹; Helen Kostami ¹; Asimina Demou ¹; S Sakellariou ²; Konstantinos Papakostidis ¹,
¹University Hospital of Ioannina, Greece; ²National and Kapodistrian University of Athens, Greece
- e005 **Meaningful assessment of the alignment of the foot and ankle in radiological practice**
Philipp Riede; Dexter Valencia; Elliott Rees; Holly Christopher; Scott McDonald, Addenbrookes Hospital
- e006 **Don't forget the nerves: Peripheral neurological causes of ankle and forefoot pain**
Maira Hameed; Prashant Sankaye, Imperial Healthcare NHS Trust
- e007 **Accessory ossicles of the foot - a pictorial review**
Fatima Ahmed; Khizer Rana, Sandwell & West Birmingham Hospitals NHS Trust
- e008 **Role of coronal stir during routine MR of cervical spine**
Rajesh Botchu ¹; Jose Yusta-Zato ¹; Rachit Shah ¹; Hiten Panchal ^{2,1}The Royal Orthopedic Hospital; ²Sanya Pixel Diagnostics
- e009 **MR imaging features of cervical spine synovial cysts**
Davina Mak ¹; Alessandro Vidoni ²; Steve James ³; Munchi Choksey ⁴; David Beale ⁴; Rajesh Botchu ^{3,1}Guy's and St Thomas' NHS Foundation Trust; ²Cardiff and Vale Orthopedic Centre (CAVOC) University Hospital Llandough; ³Royal Orthopaedic Hospital NHS Foundation Trust; ⁴Heath Lodge Clinic
- e010 **Osteochondromas of the cervical spine: An educational pictorial review**
Jennifer Murphy; Anish Patel; Steven James; A M Davies; Rajesh Botchu, Royal Orthopaedic Hospital
- e011 **Know your cystic and cyst-mimic lesions around the knee joint**
Jenn Shiunn Wong; Rahul Anaspure, Royal Devon and Exeter NHS Foundation Trust
- e012 **Musculoskeletal causes of groin pain: A pictorial review**
E McLoughlin ¹; JA Yusta-Zato ¹; S James ¹; AM Davies ¹; D Beale ²; R Botchu ^{1,1}Royal Orthopaedic Hospital Birmingham; ²Heath Lodge Clinic, Solihull
- e013 **When in doubt, gout: A pictorial review of the radiological musculoskeletal manifestations of gout**
Maira Hameed; Prashant Sankaye, Imperial Healthcare NHS Trust
- e014 **Traumatic acromioclavicular injuries and postoperative management**
Ebrahim Y A Palkhi ¹; Abbas Y A Palkhi ²; Edward Lightfoot ¹; David Copas ¹; Daniel Fascia ¹; Jon Sharpe ¹; Neal Larkman ¹,
¹Harrogate District Hospital; ²University of Leeds Medical School
- e015 **Audit of a MRI fast track stroke protocol to improve imaging patient pathways**
Jacqueline Pursey ¹; Claire Currie ², ¹Queen Elizabeth University Hospital; ²Glasgow Caledonian University
- e016 **'Fast' MRI brain in suspected stroke - implementation of a new pathway at the Princess of Wales Hospital (POW), Bridgend**
Alex Powles; Sharon Donovan; Christopher Goodwin, Princess of Wales Hospital, Bridgend
- e018 **CT evaluation of adult epiglottitis - a case report**
Fatima Ahmed; Khizer Rana, Sandwell & West Birmingham Hospitals NHS Trust
- e019 **Intracranial, intraventricular lesions: A pictorial review**
Rebecca Hunt; Matthew Spurr; Fionn Williams, North Bristol NHS Trust
- e020 **Paediatric CT head lens exclusion re-audit**
Cleofina Furtado; Feyi Babatola; Nadir Khan, Royal Stoke University Hospital, University Hospitals of North Midlands NHS Trust
- e021 **Documentation rates of thyroid nodule "U" classification score**
Obaid Hashmi, Hinchingsbrooke Hospital
- e022 **U-turn in thyroid nodule management: The implications of using the U-score to guide fine needle aspiration cytology**
Emily Guilhem; Tharsi Sarvananthan; Nicholas Hughes; Puja Patel, Frimley Park Hospital
- e023 **Extra-laryngeal causes of vocal cord palsy: A 1 year review of cases**
Anthony George; Caroline Styles, Royal United Hospital
- e024 **Osteonecrosis of the jaw**
Lucy Boyle; Hannah Marsh; Mandy Williams; Freya Smith-Jack, University Hospitals Bristol NHS Foundation Trust
- e025 **Breast imaging pregnant and lactating patients: A pictorial review**
Archita Gulati; Megan Bydder; Caroline Parkin, Manchester University NHS Foundation Trust
- e026 **Breast screening for transgender people**



- Archita Gulati; Kulkarni Trupti; Gillian Hutchison; Caroline Parkin, Manchester University NHS Foundation Trust
e027 **Usefulness of Elkund technique among women with implants undergoing breast screening in a DGH**
Louise Robinson; Dhivya Murthy Paravasthu; Furhan Razzaq, Warrington and Halton Hospitals NHS Foundation Trust
- e028 **Applications of MRI in breast disease: A pictorial review**
Katerina Ntailiani; Caroline Parkin; Trupti Kulkarni, Manchester University Foundation Trust
- e029 **Diagnostic accuracy of stereotactic and tomosynthesis guided breast biopsy**
Soek Mui ¹; Gillian Hutchison ², ¹Manchester Radiology Training Scheme; ²Manchester University Foundation Trust
- e030 **Congenital agenesis of the pericardium: When the heart breaks free**
Stavroula Theodorou ¹; Daphne Theodorou ²; Sachiko Kakitsubata ³; Yousuke Kakitsubata ³, ¹Department of Radiology; University Hospital of Ioannina, Greece; ²Department of Radiology, ²General Hospital of Ioannina, Greece; ³Department of Radiology, Miyazaki Konan, Japan
- e031 **Pictorial review of non-malignant lesions of the chest with radiology-pathology correlation**
Madhusudan Paravasthu; Gaurav Sundar; John Curtis; Erica Thwaite, Aintree University Hospitals NHS Trust
- e032 **An audit into outcomes of inferior vena cava filters**
Ahmed Ali; Martin Swali; Steve Dsouza, Lancashire Teaching Hospitals Foundation Trust
- e033 **Patient exposure to radiation during implantable cardioverter defibrillator implants: A comparative study of transvenous and subcutaneous systems**
Michael LG Couzins; Benedict M Wiles; Paul R Roberts; Stephen P Harden, University Hospital Southampton NHS Foundation Trust
- e034 **Shear wave elastography for characterisation of carotid artery plaques: In vitro study**
Fahad Farhan m Almutairi, University of Leicester
- e035 **Rupture of the abdominal aorta: A dreaded complication of pancreatic infection**
Stavroula Theodorou ¹; Daphne Theodorou ²; Savvas Tsigas ²; Aggeliki Pappas ²; Thomas Tzimas ³, ¹Department of Radiology, University Hospital of Ioannina, Greece; ²Department of Radiology, General Hospital of Ioannina, Greece; ³Department of Internal Medicine, General Hospital of Ioannina, Greece
- e036 **Distribution of colonic cancers on CT colonoscopy in symptomatic referrals in relation to the presenting symptoms**
Catalin Ivan; Jay Pancholi; Sarah Hudson; Mosheir Elabassy; Ratan Verma; James A Stephenson, Gastrointestinal Imaging Group, Department of Radiology, University Hospitals of Leicester
- e037 **Distribution of extra-colonic cancers identified at CT Colonoscopy in symptomatic non-screening patients referred from primary care with IDA and CIBH**
Catalin Ivan; Jay Pancholi; Sarah Hudson; Mosheir Elabassy; Ratan Verma; James A Stephenson, Gastrointestinal Imaging Group, Department of Radiology, University Hospitals of Leicester
- e038 **Audit of CT colonography compared to optical colonoscopy with pictorial case review**
Robert Briggs; Senthilvel Nandini, County Durham and Darlington NHS Foundation Trust
- e039 **Timing optimisation of the hepatic arterial phase for post-contrast dynamic liver magnetic resonance imaging**
Kholoud Alwashmi ¹; Martina Morrin ²; Sarah Traynor ³; Eavan Thornton ³, ¹University College Dublin; ²Royal College of Surgeons in Ireland; ³Bon Secours Hospital
- e040 **Forgotten but not gone: Delayed complications due to retained appendicoliths following appendicectomy; a seven year single centre experience**
Conor Barry; Ciaran Redmond; David Brophy, St. Vincent's University Hospital
- e041 **Appropriateness of plain abdominal film requests in Sandwell and West Birmingham hospitals NHS trust**
Al-Assam Hayder; Rehaan Nensey; Keshav Kulkarni; Mikhil Mirajkar, Sandwell and West Birmingham Hospital NHS Trust
- e042 **An unusual case of bilateral hydronephrosis in an elderly man**
David Nicholson Thomas; Sally Zebari; Mohammad Daneshi, Croydon University Hospital
- e043 **Percutaneous nephrostomy success and complications and comparison of local practice with standards of practice, quality improvement practice guidelines 2016**
Charlotte Jones¹; Christopher Cook², ¹Taunton and Somerset NHS Trust; ²Weston Area Healthcare Trust
- e044 **Audit of CT urograms for the investigation of haematuria**
Emily Guilhem ¹; Colin Todd ², ¹Chelsea and Westminster Hospital; ²Kingston Hospital
- e045 **Pictorial review of the role of radiology in the diagnosis and treatment of testicular varicoceles**
Andrew Sawyer; Clare Bent; Christopher Watts; David Beckett; John Oakes; Luke Bolton, Royal Bournemouth Hospital
- e046 **A groin lump in pregnancy: Round ligament varicosities or inguinal hernia?**
Sally Zebari; Shikha Pandhi; Ambreen Irfan, Croydon University Hospital
- e047 **Radiological assessment of pelvic endometriosis**
Shikha Pandhi; Devleen Mukherjee; Nelesh Jeyadevan; John Rendle, Croydon University Hospital
- e048 **Hysterosalpingogram audit in a district general hospital**
Michelle Roper, West Suffolk Foundation Trust
- e049 **Balanced steady state free precession in MRI foetal imaging of the abnormal placenta**
Lindsay Walker, Warrington, Wigan and Leigh NHS Foundation Trust



- e050 **Diagnostic yield of CT urograms for ureteric pathology**
Emily Guilem; Colin Todd, Kingston Hospital
- e051 **Adnexal masses: Correlation of MRI and pathological findings**
James Baren ¹; Seichung Sak ²; Andrea Sanderson ², ¹Leeds/Bradford Radiology Academy; ²Mid Yorkshire NHS Trust
- e052 **Clinical outcomes in paediatric intussusception reduction following human factors training**
Pat Set; Tim Nye; Nicholas Heptonstall, Addenbrookes Hospital Cambridge
- e053 **Contrast opacification in split-bolus single-pass CT protocol for paediatric trauma**
Neda Noroozian; Vincent Jinneng Leung; Nadir Khan; Hefin R Jones, Royal Stoke University Hospital
- e054 **Automated bone age assessment yields comparable results to paediatric radiologist reports**
Philip Jarvis ¹; Katie Giles ²; Simon Thorogood ²; Yadlapalli Kumar ², ¹Peninsula Radiology Academy; ²Royal Cornwall Hospitals NHS Trust
- e055 **Dose length product of CT colonoscopy performed in screening and symptomatic patients and correlation with abdominal circumference**
Mohamed Tofeig; James Stephenson; Catalan Ivan; Ratan Verma; Jay Pancholi, Hospitals of Leicester
- e056 **Adequacy of trauma C-spine X-ray: A case for 'straight to CT'?**
Ishaana Munjal; Christopher Ng, South Tyneside NHS Foundation Trust
- e057 **Adequacy of clinical information on electronic request forms for trauma X-rays from emergency department, clinical audit**
Nandini Senthilvel¹; Sarath Bethapudi², ¹Darlington Memorial Hospital; ²County Durham and Darlington NHS Foundation Trust
- e058 **Audit to ascertain the accuracy of administered dose and degree of extravasation of injected 18FDG in PET**
Aisha Syed; Shandana Qamar; Patrick Fielding, University Hospital of Wales
- e059 **A retrospective dose audit to compare dual energy to conventional protocols and discuss the advantages of using dual energy CT scanning on image quality**
Hannah Bergman; Paula Merry; Andrew Gogbashian, Paul Strickland Scanner Center
- e060 **Treatment response assessment maps (TRAMs) in MRI: Adapting a published article into clinical practice**
Scott Robertson; Cheryl Richardson, Royal Marsden Hospital NHS Foundation Trust
- e061 **Whole-body MRI imaging for myeloma - our initial experience**
Jamal A Abdulkarim ¹; Claire Worrall ²; Victoria A Burrows ¹, ¹George Eliot Hospital; ²Warwick University
- e062 **Knocking heads: Compliance to the NICE [CG176] guidance on use of standardised head injury pathways and CT imaging in adult traumatic head injuries**
Muhammad Khan; Osman Janjua; Ali Rameto, Manchester University NHS Foundation Trust
- e064 **Every penny counts! Stock management and waste reduction of biopsy needles**
Nicola Spence; Katharine Forsyth; Gerald Lip, NHS Grampian
- e065 **Using comments cards to improve patient experience**
Rachael Bowie; Teresa Letchford; Rupi Jillard; Vicki Major; WL Wong, Paul Strickland Scanner Centre
- e066 **Audit on the adequacy of completion of radiology request cards**
Abdelhamid Sabri Abdu, Shrewsbury and Telford NHS Trust
- e067 **Communications skills in the human factors curriculum of clinical radiology - the East of England experience**
Pat Set; Flora Daley; Saqib Butt; Nadeem Shaيدا, Addenbrookes Hospital Cambridge
- e068 **Why is human factors training important in clinical radiology?**
Pat Set; Flora Daley; Saqib Butt; Nadeem Shaيدا, Addenbrookes Hospital Cambridge
- e069 **Developing an app for MSK radiology and beyond - what do we need it for?**
Charles Bishop¹; Francesca Mazzola², ¹Royal Sussex County Hospital; ²The Royal Marsden Hospital Trust
- e070 **Social media: An invaluable radiology resource for medical students**
Abbas Y A Palkhi ¹; Ebrahim Y A Palkhi ², ¹University of Leeds Medical School; ²Leeds Teaching Hospitals NHS Trust
- e071 **Imaging features of body packing and its potential complications**
Nirav Bhatt; Vitor Fialho-Lopes; Sheena McLaggan; Nicholas Bassett, Luton and Dunstable University Hospital
- e072 **Intense diffuse skeletal muscle uptake in PET-CT patients imaged with 18F-FDG**
Vicki Major; Teresa Letchford; Rachael Bowie; Christopher Shepherd; Hannah Bergman, Paul Strickland Scanner Centre
- e073 **Immunotherapy related synovitis and the role of radiological investigations: Two case studies**
Meghavi Mashar; Safia Rehman, Oxford University Hospitals NHS Foundation Trust
- e074 **The RadSearching group: A community for all radiography learners**
Julie Woodley; Janice St-John-Matthews; Simon King; Jan Chianese; Claire Bennett, Univeristy of the West of England
- e075 **Fluoroscopy: An essential modality in the age of high-resolution CT/MRI/US**
Nathaniel Shalom; Gary Gong; Martin Auster, The Johns Hopkins Hospital
- e076 **Unprovoked VTE - CT or not CT**
Andrew Lynch; Alistair Gummow; Dominic Clarke, Royal Derby Hospital
- e077 **Evaluation of MRI imaging post treatment in head and neck cancer**
Hind Saffar; Michael Dykes; Yatin Jain, The Christie Foundation Trust



- e078 **Comparison of image quality and patient dose for contrast-enhanced abdomen-pelvis scans on three CT scanner models**
[Ana Pascoal](#); [Michael Agyei](#); [Ian Honey](#), [Guy's and St Thomas' NHS Foundation Trust](#)
- e079 **Optimisation of abdomen-pelvis CT scanning protocol on Philips iCT scanners**
[Ian Honey](#); [Ana Pascoal](#); [Paul Woodburn](#); [Hema Verma](#), [Guy's and St Thomas' NHS Foundation Trust](#)
- e080 **A service evaluation of radiotherapy patients in terms of travel time, diagnosis & treatment intent, at one centre in England**
[Helena Hayes](#)¹; [Mike Kirby](#)², ¹[Lancashire Teaching Hospitals NHS Foundation Trust](#); ²[University of Liverpool](#)
- e081 **The efficacy of a radiographer-led two weeks post radiotherapy telephone follow-up for rectum cancer patients**
[Julie Duong](#); [Yat Man Tsang](#), [Mount Vernon Cancer Centre](#)
- e082 **Review of the implementation of radiographer-led insertion of fiducial markers for prostate radiotherapy**
[Caroline Chapman](#); [Linda Bryant](#); [Louise Codd](#); [Yat Man Tsang](#), [Mount Vernon Cancer Centre](#)
- e083 **Benefits of peer group supervision for support and development of the radiotherapy team in clinical practice**
[Angela Williams](#); [Urvina Shah](#), [East and North Hertfordshire NHS Trust](#)
- e084 **The use of internal coaching to support and develop therapeutic radiographers**
[Urvina Shah](#), [East and North Hertfordshire NHS Trust](#)
- e085 **Development of a novel 3D stereoscopic visualisation image-matching application for radiotherapy**
[Brook Byrd](#); [Pete Bridge](#); [Mark Warren](#); [John Fenwick](#), [University of Liverpool](#)
- e086 **Assessment of spinal rotation; is a robotic couch necessary for vertebral SABR?**
[Amy Wilson](#); [Matthew Beasley](#); [Alan Needham](#), [Leeds Cancer Centre](#)
- e087 **On-treatment imaging for breast irradiation: Evaluating accuracy using MV vs. kV techniques**
[Roxanna Hooton](#)¹; [Heidi Probst](#)², ¹[The Clatterbridge Cancer Centre NHS Foundation Trust](#); ²[Sheffield Hallam University](#)

Congress organisers



Profile Productions Ltd

+44(0) 20 3725 5840

jointcongress@profileproductions